

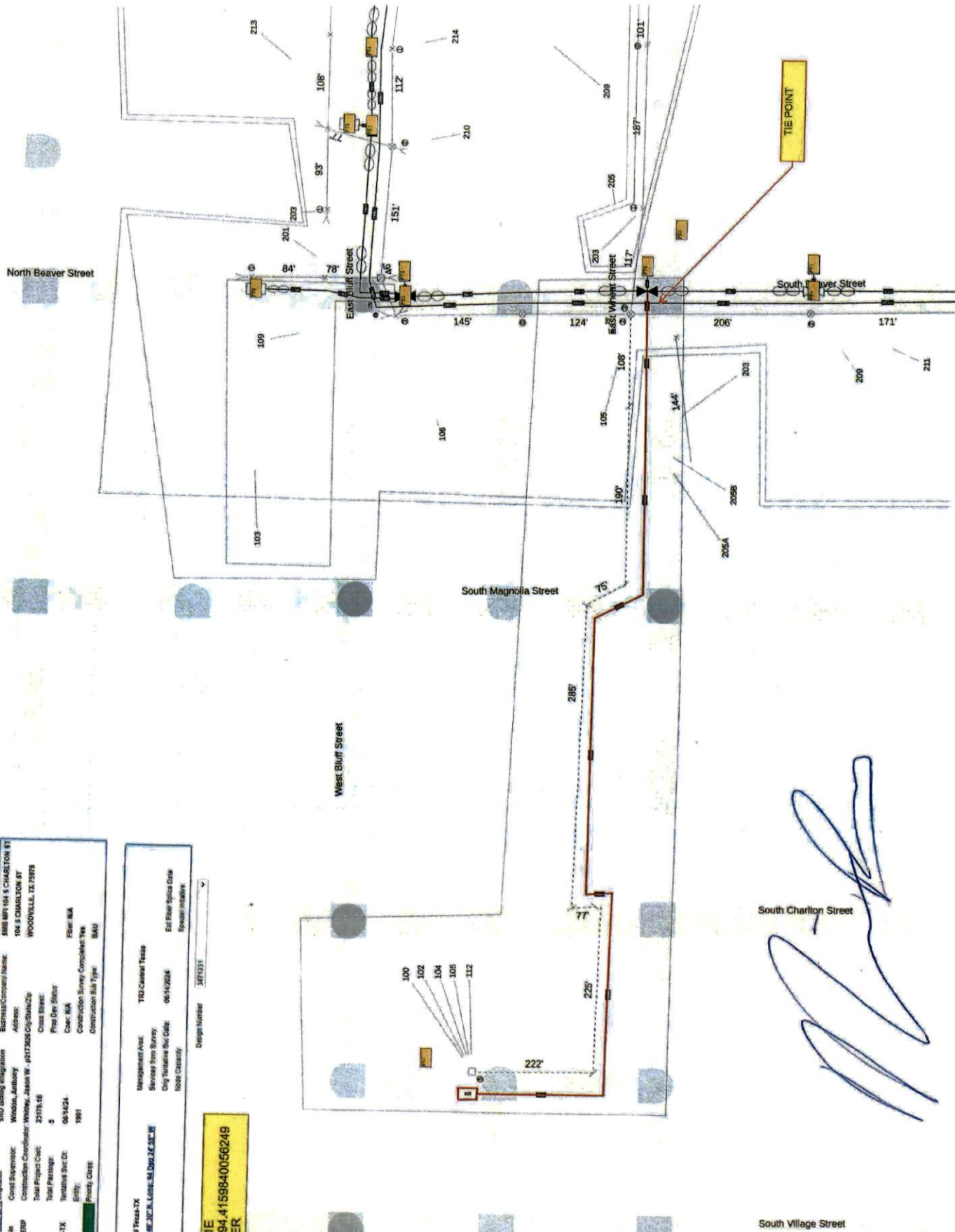
Survey Info

PROJ ID:	233558 - 1081 - West C2R Operator	SRO Billing Integration:	5448 101-104 & CHARLTON ST
Construction Type:	688 Market Fill-in	Client Supervisor:	Winston Anthony
Project Status:	PP - Funding to ESP	Construction Coordinator:	Winston, Jason W #017308 City/State/Zip
Project Start:	In Progress	Total Project Cost:	2379,16
Project Date:	04/23/24	Proj Due Status:	5
NA:	10 - SLBBE-101X	Coord. NA:	08/14/24
Work:	1081E - 1081E	Construction Survey Completed Y/N:	File: NA
Construction Due Date:	07/27/27	Construction Sub Type:	BAU

Project Design

OFF ID:	233558	Management/Asst:	TRD Central Tiesse
Map Grid:	1081-Central Texas TX	Service/From Survey:	08/14/2024
Project Approved Date:	08/14/2024	Exit File/Splice Date:	Special Initiative:
Construction Sub Type:	BAU	Book Capacity:	3471331

1081E
30.775602825832, -94.4159840056249
AFTER



FIBER EQUIPMENT

TAG	NAME	MFG	MODEL	OPTICAL SPLITTERS																																																																																																						
FE1	CTX1081D022	COMMSCOPE	FTTX_CO_450866_SPL_DIST																																																																																																							
FE2	CTX1081D023	COMMSCOPE	FTTX_CO_450866_SPL_DIST																																																																																																							
FE3	CTX1081D024	COMMSCOPE	FTTX_CO_450866_SPL_DIST																																																																																																							
FE4	CTX1081S013	COMMSCOPE	FTTX_CO_450866_SPL_SPLIT																																																																																																							
			FTTX_CO_1X32_SPL	<table border="1"> <thead> <tr> <th>PORTS</th> <th>NAME</th> <th>WAVELENGTH</th> </tr> </thead> <tbody> <tr><td></td><td>Common</td><td>N/A</td></tr> <tr><td></td><td>Out-1</td><td>N/A</td></tr> <tr><td></td><td>Out-2</td><td>N/A</td></tr> <tr><td></td><td>Out-3</td><td>N/A</td></tr> <tr><td></td><td>Out-4</td><td>N/A</td></tr> <tr><td></td><td>Out-5</td><td>N/A</td></tr> <tr><td></td><td>Out-6</td><td>N/A</td></tr> <tr><td></td><td>Out-7</td><td>N/A</td></tr> <tr><td></td><td>Out-8</td><td>N/A</td></tr> <tr><td></td><td>Out-9</td><td>N/A</td></tr> <tr><td></td><td>Out-10</td><td>N/A</td></tr> <tr><td></td><td>Out-11</td><td>N/A</td></tr> <tr><td></td><td>Out-12</td><td>N/A</td></tr> <tr><td></td><td>Out-13</td><td>N/A</td></tr> <tr><td></td><td>Out-14</td><td>N/A</td></tr> <tr><td></td><td>Out-15</td><td>N/A</td></tr> <tr><td></td><td>Out-16</td><td>N/A</td></tr> <tr><td></td><td>Out-17</td><td>N/A</td></tr> <tr><td></td><td>Out-18</td><td>N/A</td></tr> <tr><td></td><td>Out-19</td><td>N/A</td></tr> <tr><td></td><td>Out-20</td><td>N/A</td></tr> <tr><td></td><td>Out-21</td><td>N/A</td></tr> <tr><td></td><td>Out-22</td><td>N/A</td></tr> <tr><td></td><td>Out-23</td><td>N/A</td></tr> <tr><td></td><td>Out-24</td><td>N/A</td></tr> <tr><td></td><td>Out-25</td><td>N/A</td></tr> <tr><td></td><td>Out-26</td><td>N/A</td></tr> <tr><td></td><td>Out-27</td><td>N/A</td></tr> <tr><td></td><td>Out-28</td><td>N/A</td></tr> <tr><td></td><td>Out-29</td><td>N/A</td></tr> <tr><td></td><td>Out-30</td><td>N/A</td></tr> <tr><td></td><td>Out-31</td><td>N/A</td></tr> <tr><td></td><td>Out-32</td><td>N/A</td></tr> </tbody> </table>	PORTS	NAME	WAVELENGTH		Common	N/A		Out-1	N/A		Out-2	N/A		Out-3	N/A		Out-4	N/A		Out-5	N/A		Out-6	N/A		Out-7	N/A		Out-8	N/A		Out-9	N/A		Out-10	N/A		Out-11	N/A		Out-12	N/A		Out-13	N/A		Out-14	N/A		Out-15	N/A		Out-16	N/A		Out-17	N/A		Out-18	N/A		Out-19	N/A		Out-20	N/A		Out-21	N/A		Out-22	N/A		Out-23	N/A		Out-24	N/A		Out-25	N/A		Out-26	N/A		Out-27	N/A		Out-28	N/A		Out-29	N/A		Out-30	N/A		Out-31	N/A		Out-32	N/A
PORTS	NAME	WAVELENGTH																																																																																																								
	Common	N/A																																																																																																								
	Out-1	N/A																																																																																																								
	Out-2	N/A																																																																																																								
	Out-3	N/A																																																																																																								
	Out-4	N/A																																																																																																								
	Out-5	N/A																																																																																																								
	Out-6	N/A																																																																																																								
	Out-7	N/A																																																																																																								
	Out-8	N/A																																																																																																								
	Out-9	N/A																																																																																																								
	Out-10	N/A																																																																																																								
	Out-11	N/A																																																																																																								
	Out-12	N/A																																																																																																								
	Out-13	N/A																																																																																																								
	Out-14	N/A																																																																																																								
	Out-15	N/A																																																																																																								
	Out-16	N/A																																																																																																								
	Out-17	N/A																																																																																																								
	Out-18	N/A																																																																																																								
	Out-19	N/A																																																																																																								
	Out-20	N/A																																																																																																								
	Out-21	N/A																																																																																																								
	Out-22	N/A																																																																																																								
	Out-23	N/A																																																																																																								
	Out-24	N/A																																																																																																								
	Out-25	N/A																																																																																																								
	Out-26	N/A																																																																																																								
	Out-27	N/A																																																																																																								
	Out-28	N/A																																																																																																								
	Out-29	N/A																																																																																																								
	Out-30	N/A																																																																																																								
	Out-31	N/A																																																																																																								
	Out-32	N/A																																																																																																								

FIBER TERMINATION POINTS

TAG	NAME	MFG	MODEL	PORT COUNT	OPTICAL SPLITTERS
FT1	CTX10810045	COMMSCOPE	FTTX_CO_A_02_OTE	2	
FT2	CTX10810049	COMMSCOPE	FTTX_CO_A_04_OTE	4	
FT3	CTX10810050	COMMSCOPE	FTTX_CO_A_02_OTE	2	
FT4	CTX10810051	COMMSCOPE	FTTX_CO_A_02_OTE	2	
FT5	CTX10810056	COMMSCOPE	FTTX_CO_A_02_OTE	2	
FT6	CTX10810108	COMMSCOPE	FTTX_CO_A_04_OTE	4	
FT7	CTX10810111	COMMSCOPE	FTTX_U_OTE_08	8	



Bythewood Legal Services PLLC

Happy Lashes & Nails

Tyler County Clerks Office

Brad Elrod Attorney at Law

S Charlton St

S Charlton St

Tyler County Courthouse
Tyler Commissioners Court

W Wheat St
W Wheat St
W Wheat St

Doretta's Lair

S Magnolia St

Security Finance

E Wheat St
E Wheat St

Country to Country Boutique

Dixie's Vintage Vogue Home goods store